

# HEALTHY FUTURES

HASBRO CHILDREN'S HOSPITAL • 2021



**Hasbro Children's Hospital**  
The Pediatric Division of Rhode Island Hospital  
*Lifespan. Delivering health with care.®*





If the pandemic has taught us anything, it's that we're better when we work together.

At Hasbro Children's Hospital, "together" means being a part of Rhode Island's largest academic health system and collaborating with world-class clinicians, researchers, and educators to ensure that the children and families we serve have access to the very best pediatric care in southeastern New England.

Together also means partnering with an incredible donor community—people like you—whose generosity knows no bounds and enables us to advance our mission of *Delivering health with care.*

Thank you for your unwavering support.

---

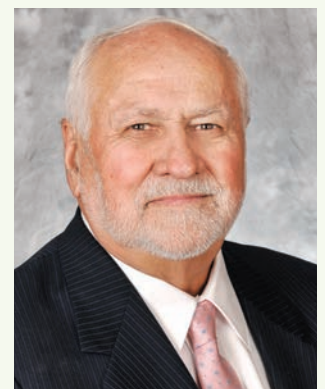
COVER: Lara Andrade and Melissa B. Mansoere, RN.

ABOVE: Elizabeth Mintzes, NP, with patient Finn.



**TIMOTHY J. BABINEAU, MD**

President and Chief Executive Officer,  
Lifespan



**LAWRENCE A. AUBIN, SR.**

Chairman, Lifespan Board of Directors  
Chairman, Rhode Island Hospital  
Board of Trustees





*Saul N. Weingart, MD*

**SAUL N. WEINGART, MD**

President  
Rhode Island Hospital and  
Hasbro Children's Hospital

Since becoming president of Rhode Island and Hasbro Children's hospitals a little less than a year ago, I have been inspired by the dedication, strength, and talent of our staff. We are beyond fortunate to have such compassionate and committed individuals caring for our patients and their families—day in and day out. Our health care providers love what they do, and our patients can feel it.

I have also been inspired by what drives so much of our work at Hasbro Children's, and that is the tremendous generosity of our selfless donor community. Despite the many challenges we've faced, it is your unwavering support that has advanced exciting initiatives, including the extensive hospital renovations made possible by the *Every Child, Every Day* campaign that you can read more about in this magazine. Hasbro Children's would not be the region's leading pediatric hospital without our staff, or without people like you who care so deeply about our children.

Thank you for your generosity, especially during these unpredictable times. Every gift helps ensure we are able to continue to deliver the best care possible to every child who walks through our doors.

**E**very *Child, Every Day* is the name of Hasbro Children's recently completed, multiyear capital campaign, but the phrase could just as easily be used to define who we are here for and when we are committed to delivering the lifesaving care they count on.

As the premier pediatric facility for clinical care, research, and education in southeastern New England, and home to the region's only Level 1 pediatric trauma center, Hasbro Children's is always ready to care for the kids and families in our community. Fortunately, we have the support of our loyal donor family—caring people like you—to help us with this work.

Simply put, philanthropy fuels much of the groundbreaking research and innovative programs taking place at Hasbro Children's. It also helps us acquire the leading-edge technology we use in many of the pioneering procedures performed here. So, the types of success stories we're able to share in these pages are made possible, in large measure, because of your generosity.

That's why it is with gratitude we share our annual Honor Roll of Supporters in this publication as a token of our appreciation and to acknowledge all you've done to help make Hasbro Children's the special place of hope and healing it is.

Thank you for caring so deeply about our kids.



*Phyllis A. Dennerly, MD*

**PHYLLIS A. DENNERLY, MD**

Pediatrician-in-Chief and  
Medical Director,  
Hasbro Children's Hospital  
Sylvia Kay Hassenfeld Professor and  
Chair of Pediatrics,  
The Warren Alpert Medical School  
of Brown University



*François I. Luks, MD, PhD*

**FRANÇOIS I. LUKS, MD, PHD**

Pediatric Surgeon-in-Chief,  
Hasbro Children's Hospital  
Professor of Surgery and Pediatrics  
Chief, Division of Pediatric Surgery  
The Warren Alpert Medical  
School of Brown University





Hasbro 4 inpatient work station

## RENOVATIONS NEARING THE FINISH LINE!

Two years ago, as part of the \$35 million *Every Child, Every Day* campaign, sweeping renovations began at Hasbro Children’s to transform the region’s leading pediatric hospital and position it as a premier care provider well into the future. Today, most phases of the extensive work have concluded or are reaching their final stages, and all projects are expected to be completed by spring 2022.

“The finish line is definitely in sight, and we are all very excited about that,” says Tracey Wallace, Vice President of Pediatric Services. “The structural changes being made to our physical space reflect how health care has evolved over the years and incorporate what we know about the importance of creating family-centered healing environments to ensure optimal outcomes.”

Improving the hospital experience for patients and families and helping staff achieve their mission of *Delivering health with care* was at the heart of every design and construction decision—and it shows.

For patients and families, more comfortable furniture, new areas for quiet conversation or to consult with doctors, improved wayfinding signage, enhanced color schemes and plentiful art, and entirely reimagined outdoor space for respite and activities are just some of the welcome additions. Smarter room layouts, which enable staff quicker, easier access to the technology, equipment, and supplies they need, is but one example of the improvements on the provider side.



Inpatient room

### ‘It took a village’

Tracey emphasizes that “it took a village” to get the hospital where it is today, and that many individuals and organizations are deserving of shout-outs. Chief among them, she says, are Dimeo Construction—our exceptional builder partner who was mindful to minimize any disruption to patient care—and, of course, our incredible donor community.

“Without philanthropic support we would simply not be able to do this work or be in a position to serve the community to the level that we do,” Tracey says. “We are fortunate and grateful to have such committed, caring people on our side.”



## At a Glance: Some Recent Updates

### Hasbro 4 Inpatient

All 24 rooms have been fully renovated. Upgrades include larger, redesigned sleeping areas; calming, controllable lighting; expanded space for staff and supplies; new technology to allow for in-room patient validation, scannable medications management, and improved safety processes. **Completed.**

### Emergency Department

The trauma room has been completely revamped. The layout was reworked to maximize storage, ease access to critical supplies. Additionally, a teaching/observation area was carved out; new, state-of-the-art equipment was added; provider workstations were modified to enhance communication and coordination; and rooms received an overall “facelift” to make them more kid friendly. **Completed.**

### Upper and Lower Lobbies

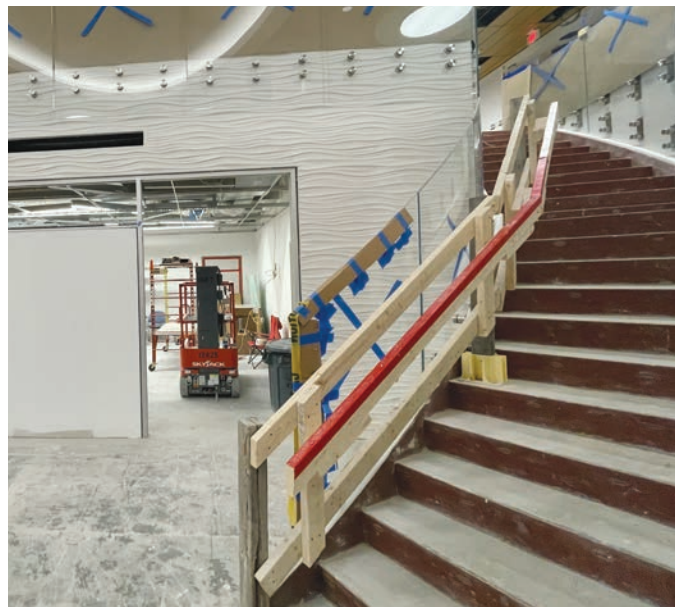
The entire spaces are being remodeled. Open areas brightened, revitalized; semi-private sitting stations and large conference room added; and improvements to visitor validation and security areas. But the pièce de résistance—literally—will be a huge sculpture, designed by award-winning artist Peter Diepenbrock. The colorful stainless steel and glass mobile-like installation will hang from the ceiling in the atrium for all to see and enjoy. Scheduled completion: **Early 2022.**

### Hasbro 5 Inpatient

Sixteen rooms have been removed with a portion of the space being repurposed as a dedicated pod for immuno-compromised hematology/oncology patients. This will be a closed unit to ensure proper air flow/quality and meet infection control standards. Scheduled completion: **Spring 2022.**



Upper lobby



Lower lobby



The Tomorrow Fund Clinic reception desk



Ambulatory Clinic reception

# TURNING VISION INTO REALITY: PHILANTHROPY TRANSFORMING PEDIATRIC CARE

**W**hen Hasbro Children's and Bradley hospitals publicly launched the *Every Child, Every Day* campaign in September 2019, the ambitious effort set out to transform the delivery of pediatric care in our region. Today, that vision is closer to reality than ever before thanks to a community of generous donors whose philanthropy has driven transformational change.

This past summer, the campaign surpassed its goal of \$35 million, raising in excess of \$40 million.

"It is simply amazing to consider the way in which our donor family rallied together, not only around our vision, but on behalf of the children and families who depend on us," says Saul Weingart, MD, president of Rhode Island and Hasbro Children's hospitals. "It shows you how much our community cares about the health and well-being of our kids."

While much attention has focused on the physical transformation of our two award-winning hospitals—such as a revamped emergency department, PICU, and modernized patient rooms at Hasbro Children's, and Bradley's new Verrecchia Clinic for Children with Autism and Developmental Disabilities—millions of philanthropic dollars are growing essential programs.

Thanks to incredible donor support, our teams of nationally recognized clinicians and researchers are advancing our priorities to deliver the future in pediatric care. Across a wide spectrum that includes the neurosciences, oncology, child protection, chronic illness, medical-psychiatric, surgical



services, and more, local families have access to the very best care right where they need it most—close to home.

Hasbro Children's Hospital and Bradley Hospital are beyond grateful to the literally thousands of donors—individuals and families, businesses, corporations, and foundations—who made gifts and contributed to the success of our campaign. With you by our side, we're caring for children, so they not only survive their illnesses, but thrive in life.

## A special thanks to our campaign donors who made generous gifts of \$500,000 or more

The Estate of Colleen M. and Arthur D. Anderson • Balise Auto and Balise Subaru • The Champlin Foundation • Children's Miracle Network Hospitals • The Collis Foundation • Mary Jane and Glenn Creamer • Cumulus Providence • Local Dunkin' Business Owners • FM Global • The Estate of Diane and Anthony Loporchio • Murray Family Charitable Foundation Rhode Island Medical Imaging • The Honorable and Mrs. Bruce M. Selya • Virginia H. Soutter • The Tomorrow Fund University Orthopedics • van Beuren Charitable Foundation • Al and Gerrie Verrecchia • Walmart • Yawkey Foundation

## PATIENT COMFORT IS TOP PRIORITY

The renovations to Hasbro Children's Hospital, made possible thanks to donor support, will benefit every child who receives care. But they may have the most impact on patients with cancer and blood disorders, who often stay at the hospital for several weeks at a time, says Rishi Lulla, MD, the Director of Pediatric Hematology/Oncology at Hasbro Children's and the Alan G. Hassenfeld Associate Professor of Pediatrics at The Warren Alpert Medical School of Brown University.

"Certain patients spend the better part of six months in the hospital, so making this environment as modern, calming, and healing as we can is really a priority," says Dr. Lulla.

"Home away from home" is a phrase often used to describe Hasbro Children's fifth-floor pediatric hematology/oncology inpatient unit.

Sharon Barbosa, of East Taunton, Massachusetts, and her two-and-a-half-year-old son, Finn, know what it's like to "live" at Hasbro Children's. Since Finn began treatment for anaplastic ependymoma – a rare and aggressive brain tumor – they have spent about 60 days on the hospital's fifth floor.

When Sharon is getting ready to head to the hospital with Finn, she packs up a salt lamp, get-well cards, nightlight, stuffed animals, and other items to make the space feel more home-like.

"When you're there for a long time, you want to make it feel like a good, happy place," she says. "Finn can sense it, too."

The rooms they have stayed in have been comfortable, she says, but they're a little dated. After all, they were built in 1994.

"Medicine has changed a lot in the last 25 years, and so many of the things we thought we needed when we built the hospital are very different now," says Dr. Lulla.

Upgrades to the fifth floor include computers in every room to streamline access to medical records for doctors and nurses, and amenities such as new, comfortable beds for parents, improved lighting, and more well-placed electrical outlets.

And, unique to the floor is the creation of a protective environment, with special filtered heating and cooling systems to prevent immunocompromised patients from being exposed to pathogens. The selection of everything from furniture to tiles was well thought out to limit the risk of infections.

While no child or parent wants to go to the hospital, Sharon says she's looking forward to seeing the fifth floor's makeover once it's complete.

"At Hasbro Children's, the care you get is phenomenal, and now the building will reflect that, with a beautiful space to go with it," Sharon adds.



Finn Barbosa



# AT THE HEART OF EVERYTHING WE DO

## Patient- and Family-Centered Care



Karine and Lara (front center) with some members of her PICU care team

“I had no idea I was in a helicopter,” recalls Lara Andrade, reflecting on that fateful day in March 2021 when she was airlifted to Hasbro Children’s from a hospital near her family’s Massachusetts home.

It all began a week prior when Lara, now 17, was complaining about headaches that wouldn’t go away. Her mom, Karine, and dad, Avelino, took her to the local emergency department, where she was diagnosed with an ear infection. A few days later and not yet feeling better Lara started struggling to breathe.

She was rushed back to the nearby hospital and a barrage of tests came back normal. But Lara’s sudden, odd, and confused behavior alarmed doctors, who wanted her to go to Hasbro Children’s immediately.

“I didn’t even know where Providence was,” says Karine, who grew up in Cape Verde. “I started to wonder if she was going to survive, that’s how scared I was.”

More than a decade ago, Hasbro Children’s tapped Fran Pingitore, PhD, PCNS-BC, to lead its Patient- and Family-Centered Care initiative. The model aimed to redefine relationships in health care by emphasizing collaboration to plan, deliver, and evaluate care among providers, patients and families. It would later be instrumental to Lara’s medical journey.

“As providers and as a hospital, we do a lot to and for our patients, but this was about partnering with our patient families, amplifying their voice in the care of their child, and meeting them where they’re at,” Dr. Pingitore says.

‘Meeting families where they’re at’ is a mantra you’ll hear frequently at Hasbro Children’s. It’s the hospital’s commitment to getting to know and understand each family’s individualities and where they may be with their anxieties and fears—which, ultimately, supports care delivery and leads to improved outcomes.



Shortly after landing at Hasbro Children's, Lara underwent emergency surgery to drain fluid from her brain, which had built up as a result of her ear infection and had been causing her headaches and erratic behavior. Following the procedure, Lara spent 10 days in the pediatric intensive care unit. It was where she'd meet, and bond with, Child Life Specialist Katie Lavallee.

Often called one of Hasbro Children's best-kept secrets, Child Life is an essential piece of Patient- and Family-Centered Care. The program, funded entirely by philanthropy, provides patients and families a sense of normalcy during hospitalization by supporting their psychological, developmental, and educational needs. Along with engaging in play, certified, highly-trained Child Life Specialists work with patients to educate them about their illness and what to expect during a test or procedure in non-scary ways.

"When children are calm, feel safe, and understand what is happening to and around them, their health outcomes are so much more positive," explains Micaela Hall Materne, MS, Manager of Child Life. "So, if we are preparing a child for a procedure, using a doll and actual medical equipment to demonstrate and engage in play and exploration around what they can expect makes an incredible difference."

As Lara regained her strength, Katie remained ever-present in her recovery. After Lara needed a portion of her head shaved for the placement of a shunt, Katie helped take her mind off it by doing her nails. She'd also bring Lara paints and supplies so she could create art for her four younger siblings at home. And when Katie heard those siblings were worried about their sister, she would get Lara on FaceTime with them so they'd know she was getting better.

"She made things so normal," says Lara, "and always kept me busy with fun stuff to do. I feel like I made a real friend."

One time, when Lara was craving pizza, a pie mysteriously showed up an hour later.

"Katie made it happen," smiles Karine, "I just know it."

Over the years, Dr. Pingitore has seen firsthand the impact of creating space for families to be actively engaged in their child's treatment and the results of seeking families'

perspective. Through the Family Advisory Council, families are invited to offer feedback on three main areas: program development, facilities design, and policy and procedure.

"Having the hospital's senior leadership embrace Patient- and Family-Centered Care, seek input from the council, and put it into action is very powerful," says Dr. Pingitore.

By early April, Lara was discharged and returned home. She spent the summer catching up on schoolwork and started her first job at a new grocery store in town. In September, she began her junior year of high school.

"I always felt my daughter was in the right place, but more importantly, with the right people," says Karine. "Hasbro Children's gave us everything we needed, and Child Life took away so much of the worry."

"The joy in this work is being able to touch the lives of patients and families in ways that truly help them," adds Dr. Pingitore. "All of us love what we do and have such passion for the work."



Lara and her mom, Karine

# Heroes Ball

## HASBRO CHILDREN'S HOSPITAL

### VIRTUAL HEROES BALL RAISES OVER \$880,000



Tom Stebbins and Jessica Schiano

A quick pivot from an in-person event to a virtual 2021 Heroes Ball gala did not stop attendees and supporters from generously supporting Hasbro Children's Hospital. In total, the event raised more than \$880,000 for the hospital's areas of greatest need.

On Thursday, September 23, attendees logged onto their computers to enjoy this year's Heroes Ball live from the comfort of their homes. The lively event was hosted by on-air personality Jessica Schiano of 92 PRO-FM, who was joined on stage by professional auctioneer Tom Stebbins for a spirited auction and fund-a-need appeal. The 2021 Heroes Ball was made possible thanks to the leadership of event chairs Deanna and Scott Donnelly and co-chairs, Melisa Verrecchia and Andy Marr.

Although this year's gala had a different format, it once again paid tribute to courageous children and remarkable caregivers while raising critical funds in support of the hospital's mission. Without philanthropy, many of the hospital's programs, such as Child Life and the Healing Arts, would simply not exist.

"It is humbling to be joined by so many people who support our hospitals with such passion and commitment," Rhode Island Hospital and Hasbro Children's Hospital President Saul N. Weingart, MD, said in his remarks. "Simply put, we are here for the families we care for because you are here for us, and for that I am deeply grateful."

This year's fund-a-need appeal generated \$116,000 to benefit pediatric neurology's comprehensive care and innovative treatment options for children living with neurological conditions. Each year, more than 13,000 kids suffering from a wide range of disorders of the nervous system seek care at Hasbro Children's department of pediatric neurology. When a child is suffering from a brain, spinal cord, or peripheral nerve disorder, the hospital's team of experts is there to evaluate, diagnose, and deliver world-class care while also supporting their family.

Pediatric neurology patients and their families, including 16-year-old Sophie Artery; Mary and Anthony Saladino, parents of 18-month-old patient Henry; and Verena Valle, mother of 13-year-old patient Melissa, shared moving stories of hope and healing resulting from the care they have received at Hasbro Children's.

"Everybody at Hasbro Children's has been so amazing to us, in many different ways," said Mary Saladino. "Not only were they skilled practitioners who didn't shy away from a rare disease that most doctors haven't heard of, or don't ever see in their lifetime, they dove right in and made us feel well cared for."

SAVE THE DATE FOR 2022 — AUGUST 27, 2022





# THANK YOU TO OUR SUPPORTERS!

## PRESENTING SPONSORS



## PLATINUM SPONSORS

## GOLD SPONSORS



## SILVER SPONSORS



FEAST & FETTLE



GENERAL DYNAMICS



CHRISTOPHER AND  
MARY ELLEN PATTON



THE VERRECCHIA FAMILY  
FOUNDATION

## BRONZE SPONSORS

## COPPER SPONSORS

A. Autiello Construction Co., Inc.  
Aramark  
Arden Engineering Constructors, LLC  
Aubin Corporation  
Baird  
Bally's Twin River Lincoln Casino Resort  
Bank of America Merrill Lynch  
BD  
Brown Surgical Associates, Inc.  
Wayne and Jeanie Charness  
CORE Cycle.Fitness.Largree  
Cox Business  
Delta Dental of Rhode Island  
Dorian J. Murray Foundation #DStrong

Electric Boat Employees' Community Services Association  
Jonathan and Ruth Fain Fund  
Fidelity Investments  
First Bristol Corporation  
Hart Engineering Corp.  
Scott Laurans  
Rhode Island Medical Imaging, Inc.  
The Tomorrow Fund  
Transition Solutions, Inc.  
Tufts Health Plan  
UnitedHealthcare  
The Warren Alpert Medical School of Brown University

Adler Pollock & Sheehan P.C.  
BankNewport  
Davitt Design Build, Inc.  
Day Pitney LLP  
Joseph and Sarah T. Dowling  
Epic  
Falvey Insurance Group  
Horizon Beverage Company of Rhode Island  
Huffmaster Crisis Response  
Littler  
Locke Lord LLP  
MetLife  
The Murray Family Charitable Foundation

Neighborhood Health Plan of Rhode Island  
The Neurosurgery Foundation, Inc.  
Donna Paolino Coia and Arthur Coia  
Pariseault Builders, Inc.  
Partridge Snow & Hahn LLP  
Pawtucket Credit Union  
The Peregrine Group  
Providence Mutual  
ReedGroup  
Toray Plastics (America) Inc.  
Vision 3 Architects  
VPNE Parking Solutions  
Webster Bank

## BENEFACTOR SPONSORS

Adler, Cohen, Harvey, Wakeman, Guekquezian LLP  
Baby Delight, Inc.  
BayCoast Bank  
Bernkopf Goodman LLP  
Blackstone Caterers  
Bob's Discount Furniture  
Paul Busby  
Chace, Ruttenberg & Freedman, LLP  
David and Renee Charlton  
Chisholm Chisholm & Kilpatrick LTD  
David and Deborah Crocker

D.F. Pray, Inc.  
Dr. Day Care Learning Center  
Duffy & Sweeney, LTD  
EpiVax, Inc.  
Hope Global  
HopeHealth Hospice & Palliative Care  
Melinda Knight  
Rishi Lulla, MD and Nisha Lulla  
MA Excavation, Inc.  
Cheryl Merchant  
Mott and Chace Sotheby's International Realty  
The John & Grace Murphy Family Foundation

Navigant Credit Union  
New England Laborers' Health and Safety Fund  
Donna M. O'Brien  
Residential Properties Ltd.  
Roberts, Carroll, Feldstein and Peirce, Inc.  
Savage Law Partners, LLP  
Don and Pat Swanson  
Tempus  
Willis Towers Watson  
WPRI TV Channel 12 Fox Providence  
ZDS Architecture & Interior Design

Sponsors as of 9.23.2021

## MESSAGE FROM THE CHAIRMAN



For years, I have seen up close the incredible power of philanthropy. And yet, I may be more grateful for our amazing donor community today than ever before.

In my role as foundation board chair, I am honored to work alongside some of the most selfless community leaders I've had the privilege of getting to know. Members of the Hasbro Children's Hospital Leadership Council give tirelessly of their time and talents on behalf of our community's children. And I am pleased to introduce you to two of them—Melissa Murray and Danielle Benedict.

Thank you for your support of Hasbro Children's and our mission to provide the best care possible to our region's children... today, tomorrow, and for generations to come.

Robert Vincent



Chair,  
Rhode Island Hospital Foundation Board of Trustees

## THANK YOU TO ALL THE MEMBERS OF THE HASBRO CHILDREN'S HOSPITAL LEADERSHIP COUNCIL

Wayne Charness, Co-Chair  
Phyllis A. Dennerly, MD, Co-Chair  
François I. Luks, MD, Co-Chair

Lawrence A. Aubin, Sr.  
Timothy J. Babineau, MD  
Danielle Benedict  
Elizabeth Burke Bryant  
Jeanne S. Cohen  
Celeste Corcoran, MD  
Karen Davis  
Penelope Dennehy, MD  
Bradford Dimeo  
Deanna Donnelly

Renée Evangelista, Esq.  
Samara Feldman  
Patricia Flanagan, MD  
Ed Forman, MD  
James Gilbane  
Barbara Haynes  
Robert B. Klein, MD  
Jaclyn Leibl-Cote  
Samantha Lomow  
Melissa Murray  
Stephen Olson  
Frank Overly, MD  
Joseph Pannozzo  
Holly Paras

Kinnari Patel  
James Procaccianti  
Zachary Robbins, MD  
Katina Robison, MD  
Henry T. Sachs, III, MD  
Linda Snelling, MD  
Cathy Solomon  
Jaime Tasca  
John Urban  
Melisa Verrecchia  
Grace Vincent  
Tracey Wallace  
Saul Weingart, MD, PhD  
Kyle Wohlrab, MD



## MEET MELISSA MURRAY



Melissa and Dorian Murray

**M**elissa Murray honors her son Dorian's life through giving back to various causes – and Hasbro Children's Hospital is especially close to her heart.

Dorian touched the world with his #dstrong hashtag and wish to become famous across the globe before passing away in 2016 at age eight due to complications from rhabdomyosarcoma, a rare form of pediatric cancer.

Often referred to as an "old soul," Dorian was always thinking of others, even while he was ill. For instance, he would sell his toys on the family's front lawn, in Westerly, with the intent to give the money back to his oncology clinic at Hasbro Children's.

"The hospital was essentially our home for the four years while he was treated," Melissa says. "The entire staff became important to us, and now it's important to me to support the people and the organization that helped us."

Melissa, who serves on the hospital's Leadership Council and its Heroes Ball committee, was especially happy to help raise funds for the recent *Every Child, Every Day* campaign. "I was really excited about that because it helped fund the transformation of the outdoor garden, and Dorian loved spending time out there."

Melissa also runs the Dorian J. Murray Foundation, which funds pediatric cancer research and provides grants to families with children undergoing cancer treatment. Melissa notes that she, like many parents, had to stop working while Dorian was being treated because, "we were in the hospital so much, I could not keep a job."

She relied on stipends she received through the Tomorrow Fund to help pay her utility bills and rent, and now pays it forward through her own nonprofit work.

"Prior to Dorian's passing, I hadn't done any volunteering, ever," she says. "But now, I can't imagine my life without it."

## MEET DANIELLE BENEDICT

**H**asbro Children's Hospital Leadership Council member Danielle Benedict knows what it's like to be a kid in the hospital. At age seven, she spent more than two weeks in intensive care while being treated for Reye's Syndrome, a serious condition that causes swelling in the liver and brain.

"It was important to my mom, a single mother, that I was well taken care of when she wasn't able to be at the hospital," says Danielle, who lives in Hanson, Massachusetts, with her husband, Michael. "I feel lucky because my own two kids [now 28 and 19] have always been healthy, but you always remember your own childhood."

Now, through her work on the Leadership Council, she's dedicated to raising funds for programs that support children and their families, including Child Life Services. She has also served on the Heroes Ball committee for several years. Danielle, who works as Chief Human Resources Officer at Providence-based United Natural Foods, Inc., adds that she feels fortunate to work for a company that shares her commitment to philanthropy. "You can't just be passionate about your day-to-day job, you have to live those values out in the world as well," she says. UNFI, a food distributor, has generously supported the hospital in various ways, most recently through a donation to the Primary Care Food Insecurity Program.

"I've always had a belief in giving back and spreading the word about good causes," Danielle says. "The more people who get involved, the more money we can raise to support the families that live in our communities."



Danielle Benedict

# MANCINI FOUNDATION GIFT BOLSTERS WORK OF HEALTH CLINIC



Increasingly, Rhode Island children, particularly those from lower-income communities, are struggling with weight-related conditions and seeking care at Hasbro Children's Primary Care Clinic. In response, one of the clinic's programs is making great strides in treating this vulnerable population.

Called *Healthy Eating Active Living Through Hasbro* (HEALTH), the program is directed by Celeste Corcoran, MD, and aims to reduce the issue of childhood obesity in kids and young adults through education. Participants learn about reading nutrition labels, sugar-sweetened beverages, exercise, screen time, and much more.

Recently, a generous gift from the Raymond T. and Ann T. Mancini Family Foundation helped the HEALTH program expand its important mission. The gift has funded the hiring of a part-time clinical care

coordinator who serves as a liaison to patient families in Providence and other nearby urban core cities, providing educational outreach, programming, and follow-up care.

Donating to the HEALTH program was a perfect fit for the Mancini Family Foundation as the family specifically looks to support causes related to widening access to education of all kinds, according to Deborah Mancini Morrocco. Her parents, Raymond and Ann, started the Foundation as a way to use some of the profits from their flooring and beverage distribution businesses to help those in need.

"The way the program engages families on healthy eating is very impressive," Deborah says. "It takes a lot of time and energy to deliver the education piece around what and how to eat. This program will help kids live happier, healthier lives, and it was an honor to be able to support the hospital in this way."

## HEROES FOR HASBRO

**H**eroes for Hasbro is a giving society that recognizes donors who make an annual gift of \$250 or more to one of the top funding needs at Hasbro Children's: Child Life Services, the Healing Arts Program, The Adolescent Leadership Council (TALC), the Parent Consultant, or the area of greatest need.

Gifts to these priority areas impact everyone who enters our doors and can truly transform lives. Members of this giving society are acknowledged on pages 18-23 with a double asterisks symbol (\*\*).

To learn more about the giving levels and benefits of becoming a Hero, visit [hasbrochildrenshospital.org/Heroes4Hasbro](https://hasbrochildrenshospital.org/Heroes4Hasbro).





# KIDS AND COVID: THE OTHER PANDEMIC

The stress and uncertainty created by the COVID-19 pandemic weighs heavily on everyone. But for children and adolescents, these unprecedented times have been especially worrisome. For well over a year now, kids' education, social circles, family dynamics, and community connections—bedrocks of development and well-being—have all been upended . . . and it's taking a toll on their mental health. As a result, the demand for children's mental health care services has spiked.

"The increase in 'psych presentations' to our ED—meaning patients here because of suicidal ideations or attempts, aggressive behavior, excessive anxiety, and emotional dysregulation—continues an upward trend we were already experiencing," explains Kathleen Donise, MD, Director of Lifespan's Pediatric Behavioral Health Emergency Services. "But the way patient volume has come in, and the difficulty getting those patients to the care they need, is unlike anything we've ever experienced."

In March of 2020, when the State of Rhode Island shut down, it felt like a gushing faucet was abruptly turned off, Dr. Donise says. "We all kept wondering 'Where are the kids?'" she remembers. "It was eerie and scary because their safety nets were removed, and we feared that those who were suffering in silence were likely suffering mightily." But in 2021, the faucet is back on. "It's fair to say there are two pandemics right now—the medical crisis of COVID-19 and the mental health implications we're seeing and will experience for years to come," explains Henry T. Sachs III, President of Bradley Hospital. "That's why it's so critical that the services Lifespan provides be available to address these needs and minimize the lasting impact."

Hasbro Children's works seamlessly with Bradley Hospital, Gateway Healthcare, and other partners to assess and evaluate each child and direct them to the most appropriate and effective inpatient, outpatient, or partial hospitalization program, based on their individual needs.

"It's a unique collaboration and everyone brings their 'A' game," Dr. Donise shares. "I get teary eyed thinking about the incredible compassion of our teams and how privileged I am to work with such special people."



## Supporter Shout-Outs

Of course, another bright spot during these challenging times has been the continued generosity of our incredible donor family, whose support for our patients receiving medical and/or psychiatric care is making a real difference. Here are but a few examples:

- **Andrade-Faxon Charities for Children** and **Edwin S. Soforenko Foundation**—Grants awarded to support restorative yoga for med-psych patients and the partial hospital program.
- **Cathy and Tom Lawson**—A generous gift to enhance patient programming, including offering the healing arts on weekends and staff training.
- **The Honorable and Mrs. Bruce M. Selya**—Support provided to aid clinical teams in the delivery of expert "whole child" care.
- **The Collis Family Foundation**—Funding to ensure the new PACE Clinic in the emergency department meets the rising, urgent needs of children facing psychiatric crises.
- **The Dunkin' Joy in Childhood Foundation**—The awarding of funds for our intrepid therapy dogs, CALL and Nemo.
- **The Engle Family Foundation**—Sponsorship in support of songwriting classes that promote healing through creativity and self-expression.

# CREATING A LEGACY WITH A BEQUEST

## TYPES OF BEQUESTS:

### SPECIFIC BEQUEST

A gift of a specific dollar amount or a specific asset.

### PERCENTAGE BEQUEST

A gift of a specific percentage of the value of your overall estate.

### RESIDUAL BEQUEST

A gift made from the balance of an estate after all of your other specific bequests have been distributed.

### CONTINGENT BEQUEST

A gift made to a charity only if the specific purpose of the primary bequest cannot be met.

### RESTRICTED BEQUESTS

You may restrict your gift to support a specific department or program that is important to you, or you may wish to designate your gift to support the greatest needs of the hospital.

### ENDOWMENTS

Bequests of \$25,000 or more can be used to create an endowed fund at the hospital whose distributions may benefit the hospital in perpetuity.

### POTENTIAL TAX BENEFITS

A bequest may also be an effective way to make a gift to charity and lessen the burden of taxes on your family and estate. Check with your financial advisor or other tax professional to see if you may benefit from a charitable bequest.

## ONE FAMILY'S LASTING LEGACY

One person's—or a couple's—legacy can touch the lives of thousands of children.

A charitable bequest is an easy and tangible way to have a lasting impact on the future generations of children who will be treated at Hasbro Children's Hospital.

A powerful example: Colleen and Arthur Anderson, of Barrington, who passed away in 2019 just days apart at the ages of 66 and 72, respectively, left a generous \$1.1 million gift to benefit children with cancer being treated at Hasbro Children's. The gift is currently helping to transform the fifth-floor inpatient hematology/oncology unit.

Colleen, who spent years working in human resources for Bradley and The Miriam hospitals, survived cancer herself as a young adult, according to her former colleague and friend Pat Keegler. Married for 41 years, the couple did not have kids of their own, but had a longtime affinity for children's causes.

"If Colleen heard that a child needed something, she'd always be the first one to write a check," Pat says. "This was such a powerful final act of generosity that will help so many."

With the help of an advisor, donors can include language in a will or trust specifying a gift to be made to Hasbro Children's Hospital as part of an estate plan. Assets such as an IRA, 401 (k), Donor Advised Funds (DAFs), or life insurance can be left to the hospital without creating or altering an existing will or trust. There are also immediate benefits to including Hasbro Children's in your plans for the future, including membership in The Living Heritage Society. It recognizes donors who include the hospital in their estate with bequests, charitable gift annuities, and other planned gifts. The group hosts an annual luncheon for its members.

For more information, please contact Chris Josephson at 401-444-6412 or email [chris.josephson@lifespan.org](mailto:chris.josephson@lifespan.org).



# RADIOTHON RAISES \$453,151 FOR HASBRO CHILDREN'S



The 17th annual Hasbro Children's Hospital Radiothon took place Thursday, May 13, and the event was another big success. It raised \$453,151 for the region's only pediatric hospital.

During the 12-hour event—which was broadcasted simultaneously on Cumulus Providence stations 92 PRO-FM, 630 WPRO, Lite 105, and Hot 106—Hasbro Children's patients, families and staff took to the airwaves to share their inspiring stories of hope and healing.

As listeners across Rhode Island and nearby Connecticut and Massachusetts were introduced to patients and their journeys with, among other things, rare blood disorders, aggressive cancers, multisystem inflammatory syndrome, cerebral palsy, and life-threatening heart conditions, volunteers manned

a socially distanced phone bank on the hospital's campus, answering calls to accept donations.

Radiothon donations are important because they support the hospital's ability to provide the area's children and their families the best care possible. Over the years, these funds have helped to purchase medical equipment and support programs such as the Healing Arts and Child Life, which rely heavily on philanthropy. Since its inception, the Radiothon has raised more than \$9.2 million for Hasbro Children's Hospital.

"The way Radiothon brings thousands of people together to make an impact in the lives of our patients and their families is absolutely incredible," said Phyllis A. Dennergy, MD, Pediatrician-in-Chief.

"We are fortunate to have not only dedicated partners in Cumulus and its talent, but also an extremely generous community of donors, sponsors and supporters by our side."



## SAVE THE DATE FOR 2022—MAY 12, 2022

## A BIG THANK YOU TO OUR SUPPORTERS!



MR. DAVID SCHULLER

# 2020 HONOR ROLL OF SUPPORTERS

Hasbro Children's Hospital is proud to recognize its generous supporters whose philanthropy enables the hospital to provide exceptional, compassionate, patient-centered care to the children of Rhode Island and beyond. This list reflects cumulative gifts and pledges of \$250 or more in the calendar year 2020. Many thanks for your generosity!



## \$50,000—\$99,999

Anonymous  
Michael and Liz Beretta-Perik  
Brown Surgical Associates  
Mr. and Mrs. Anthony A. Calandrelli  
CVS Health  
The Friends Of Jack Foundation  
IGT Global Solutions Corporation  
Kohl's Department Stores, Inc.  
The Edward J. and Virginia M. Routhier Foundation  
Shriners of Rhode Island Charities Trust  
Speedway  
Spirit Halloween  
Spirit of Children  
Subaru of America, Inc.

One Mission  
The Procaccianti Group, LLC  
Rhodython  
Lisa M. Dunkle Scheffler, MD and Mr. Richard J. Scheffler  
The Verrecchia Family Foundation  
Robert and Grace Vincent

## \$10,000—\$14,999

ACS Industries, Inc.  
Allied Universal  
Cathy L. Andreozi  
Bank of America  
Beltone New England  
Boston Scientific Corporation  
Mr. and Mrs. BJ Charette  
Coastal Medical, Inc.  
CORE Cycle.Fitness.Lagree  
Telemachus & Irene Demoulas Family Foundation  
Delta Dental of Rhode Island  
DePasquale Bros., Inc.  
Dimeo Construction Company  
East Commerce Solutions, Inc.  
Electric Boat Employees' Community Services Association  
Emilie Luiza Borda Charitable Fund  
Estate of Mafalda Nickerson  
Ms. Kristin Fraser and Mr. John Murphy  
Jay and Leah Gendron  
General Dynamics  
Goodfellas Motorcycle Riding Club  
IHOP Restaurants  
Dolph and Maureen Johnson  
KPMG LLP  
Dr. Francois Luks and Dr. Monique De Paepe  
Marriott International  
John H. Moran\*, MD  
Nathan Clark & Associates  
Mr. and Mrs. Timothy M. O'Neil\*\*  
Panda Restaurant Group, Inc.  
Patton Family Charitable Fund  
Pepsi Beverage Company  
R.I. Lions Children's Cancer Fund, Inc.  
Raymour & Flanigan Furniture  
Salve Regina University  
Salvethon  
Mr. and Mrs. Michael Schopp  
The Senville Foundation  
Starkweather and Shepley Insurance Brokerage, Inc.  
Transition Solutions, Inc.  
United Natural Foods, Inc.  
Warwick Mall  
The Washington Trust Charitable Foundation

## \$1,000,000+

Anthony Loporchio Trust  
Twelve Stars Foundation

## \$500,000—\$999,999

Anonymous  
The Collis Foundation  
Dunkin' Brands, Inc.  
Estate of Arthur Anderson  
FM Global Foundation  
Yawkey Foundation II

## \$250,000—\$499,999

Children's Miracle Network Hospitals  
The Murray Family Charitable Foundation  
Rhode Island Hospital Guild  
Rhode Island Medical Imaging, Inc.  
The Tomorrow Fund

## \$100,000—\$249,999

Alexander's Uniforms  
Amica Companies Foundation  
Anonymous  
Balise Auto Group  
Brown Medicine, Inc.  
Colbea Enterprises, LLC  
Golf Fights Cancer  
LPG Anesthesia  
The Honorable and Mrs. Bruce M. Selya  
The Hearst Foundations  
Mrs. Virginia H. Soutter  
University Orthopedics, Inc.  
Walmart Stores, Inc.

## \$25,000—\$49,999

Dr. Timothy J. and Mora Babineau  
Brown Physicians, Inc.  
Brown University  
Brown University Dance Marathon  
CMN Extra Life  
Mr. and Mrs. Bradford S. Dimeo  
Mr. and Mrs. Scott C. Donnelly  
The Dunkin' Joy in Childhood Foundation  
Gianna Cirella Memorial Fund  
Michael and Beth Huber  
Johnston Memorial Cancer Events  
Mr. and Mrs. Scott B. Laurans  
Cathy and Tom Lawson  
Raymond T. and Ann T. Mancini Family Foundation  
Marion Law Trust Fund  
Nerves and Bones  
Raytheon Technologies  
Re/Max, LLC  
Rhode Island Foundation  
Mr. and Mrs. Mark A. Ross  
Starlight Children's Foundation  
Terracycle US, LLC  
Textron Inc.

## \$15,000—\$24,999

Ace Hardware Corp  
Cox Business  
Dominion Harbor Group LLC  
Stephen C. Gostkowski  
H. Carr and Sons, Inc.  
Ida Ballou Littlefield Memorial Trust  
Lori's Gifts  
Cynthia and Patrick Lynch  
Minnie Sumner Woodward Trust



## \$5,000—\$9,999

Aim High Academy, Inc.  
Alex and Ani, Inc.  
Amica Mutual Insurance Company  
Anonymous (4)  
Aramark  
Arden Engineering Constructors, LLC  
Ms. Cheryl N. Babiec  
BD  
Dr. and Mrs. Arthur Bert  
Mrs. Teresa C. Bert  
Billy Andrade - Brad Faxon Charities for Children  
Mr. and Mrs. Andrew S. Bishop  
Mr. and Mrs. Robert M. Bolton  
Brown Dermatology Inc.  
Brown Neurology  
BS Management, Inc.  
Mr. and Mrs. Steven R. Carlino  
Mr. and Mrs. Wayne S. Charness  
Child Care Consultants & Facilities Management, Inc.  
William Cioffi, MD and Theresa A. Graves, MD  
The Claflin Company  
Donna Paolino Coia and Arthur Coia  
Cooperative Credit Union Association, Inc.  
Dairy Queen Corporation  
Mr. Carlos F. DaSilva  
Dr. Phyllis A. Denney and Mr. Gregory Mundy  
Epic  
Ed and Renée Evangelista  
Facebook Fundraisers  
Mr. Thomas F. Farrelly and Ms. Ruthanne T. Logan  
Dr. Lloyd Feit and Dr. Linda Nici  
Barbara Finigan Fitzgerald and Paul T. Fitzgerald  
First Bristol Corporation  
The Foundry Corporate Office Center  
Mr. and Mrs. Samuel Goldberg  
Gregg's Giving Tree, Inc.  
Gregg's Restaurants, Inc.  
Harold Winstead Charitable Trust  
Mr. and Mrs. Edward A. Hjerpe, III  
The John Clarke Trust  
Jordan's Furniture Corporate Office  
Jordan's Jungle, Inc.  
Katherine M. Daige Estate  
Michael and Michelle Kelly \*\*  
Ms. Maureen E. Kerrigan and Mr. Jeff Dentler  
Mr. and Mrs. Roderick H. Lichtenfels \*\*  
Dr. Rishi and Ms. Nisha Lulla  
Marjorie Lee Sundlun Trust  
Mr. and Mrs. Mark Marocco  
Ms. Cheryl A. Merchant  
MetLife Auto & Home  
Navigant Credit Union  
The Neurosurgery Foundation, Inc.  
Mr. Jason Pacheco  
Pariseault Builders, Inc.  
Mr. and Mrs. Jason Pinheiro  
Dr. Judith A. and Mr. Jonathan S. Pratt  
Providence Auto Body, Inc.  
David and Belle Rampone \*\*  
Realty Promotion and Events Corporation  
The Russell A. Boss Family Foundation \*\*  
Mr. David D. Schuller  
Semper Home Loans, Inc.

Shaw's Supermarkets, Inc.  
Mr. and Mrs. Brian S. Snowden  
Mr. Douglas Kenneth Spracklin and Ms. Debra Laura Jane \*\*  
Staples, Inc.  
Mr. and Mrs. Michael J. Szostak\*\*  
Tori Lynn Andreozzi Foundation  
Ms. Deborah M. Thomas \*\*  
Tufts Health Plan  
United Healthcare of New England, Inc.  
Vs. Cancer Foundation  
Willis Towers Watson  
Dr. and Mrs. Conrad W. Wesselhoeft \*\*  
Willow Tree Farm

## \$2,500—\$4,999

Adler Pollock & Sheehan, PC  
Adolph Masciandaro Trust  
Daniel and Stacie Allen\*\*  
Andrea Rizzo Foundation  
Ms. Sharon O. Albert \*\*  
Alexandra's Bridal Boutique  
Anonymous (2)  
Baird  
BankNewport  
Mr. and Mrs. Stephen Beneduce \*\*  
Attorney and Mrs. Michael Bottaro, Esq.  
Mr. and Mrs. Howard Bromberg\*\*  
Camille's Restaurant  
Peter and Jennifer Capodilupo \*\*  
Chisholm Chisholm & Kilpatrick LTD  
Coca-Cola North America  
Collette  
Compensation Advisory Partners  
Aristides J. Cruz, Jr., MD, MBA & Ashley T. Peterson, MD  
Frank DelSanto, EdD. \*\*  
Mr. and Mrs. George E. Dlugos \*\*  
Nick and Diane Dominick  
Dorian J. Murray Foundation  
Duffy & Sweeney, LTD  
Craig P. Ebersson, MD  
Mohammed K. Faizan, MD  
Falvey Insurance Group  
The Frances Waterhouse Richmond Fund  
Gabrielle Dinsmore Heart & Hope Fund  
GE Healthcare  
Horizon Beverage Company of Rhode Island  
Howland Evangelista Kohlenberg, LLP  
Mr. and Mrs. Christopher Jackson \*\*  
John and Ann Kashmanian  
Littler  
Jeff Mammano \*\*  
Robert and Lynn Manning  
Mr. Andrew T. Marshall \*\*  
Meehan Foundation, Inc. \*\*  
Mrs. Patricia A. Monti \*\*  
Morgan Stanley  
Neighborhood Health Plan of Rhode Island  
Ornament Rescue League  
Mr. and Mrs. Joseph G. Pannozzo  
Partridge Snow & Hahn LLP  
Mr. and Mrs. Mikko J. Passananti  
Mr. and Mrs. Jaymin B. Patel  
Ms. Diana P. Pereira  
Mr. and Mrs. Jerome J. Perez\*\*

Mr. and Mrs. Gary D. Pierce \*\*  
Providence Sports + Entertainment  
ReedGroup  
Rhode Island Novelty, Inc.  
Roberts, Carroll, Feldstein and Peirce, Inc.  
Ross-Simons Jewelers  
Mr. Paul Ruggieri  
Tim and Fran Stenovitch  
Mr. and Mrs. John A. Tarantino \*\*  
United Networks of America  
Mr. and Mrs. Joseph Wallace  
Webster Bank

## \$1,000—\$2,499

A. Autiello Construction Co., Inc.  
Adler, Cohen, Harvey, Wakeman, Guekguezian LLP  
Paul J. Adler and Lori Basilio  
Hinckley Allen  
Mrs. Sheryl C. Amaral, MBA, MS CCC-SLP  
Mr. and Mrs. Glenn D. Andrews \*\*  
Anonymous (4)  
The Anu and Mahesh Jayaraman Family Fund  
Mr. and Mrs. Peter J. Arment  
Mr. Ian Aubourg



Mr. and Mrs. Michael W. Baker \*\*  
Barrington Police Department  
Manny and Wanda Barrows  
BayCoast Bank  
Roger and Diane Begin  
Mr. and Mrs. Donald A. Bence \*\*  
Mrs. Danielle M. Benedict  
Ms. Joy Benjamin  
Mr. and Mrs. Richard R. Beretta, Jr.  
Mr. Alan S. Betts \*\*  
Blackstone Caterers  
Bob's Discount Furniture Charitable Foundation, Inc.  
Mr. Ellis H. Bougiouris  
Jane and Joseph Bruno  
Scott and Kathleen Burton  
Paul Busby  
Nicholas J. Caldaron Foundation  
Angela M. Caliendo, MD, PhD  
Mr. Reginald C. Campbell, Jr. \*\*  
Mr. and Mrs. Brian P. Cavanagh

Mr. and Mrs. David A. Cesario  
 Dr. Anjulika Chawla and Mr. Ronald Poirier  
 Wendy S. Chen, MD  
 Coastline Trust Company  
 Mr. Ronald A. Colantonio  
 Mr. and Mrs. Nicholas Costa  
 Mr. and Mrs. James W. Crandall \*\*  
 Mr. and Mrs. David V. Crocker  
 Karen L. Daigle, MD  
 D'Ambra Construction Co. Inc.  
 Davenport Bar & Grill  
 David & Robin Ryan Family Foundation \*\*  
 Mr. and Mrs. James A. Davis, Sr.  
 Mr. and Mrs. Anthony DelVecchio \*\*  
 DiSanto Priest Charitable Foundation  
 Mr. Mark P. Dolan and Kimberly Gibbs O'Hayer  
 Joseph L. Dowling, Jr., MD and Mrs. Sarah T. Dowling, Esq.  
 Drs. Maria and Joseph Ducharme  
 Susan J. Duffy, MD \*\*  
 Dunkin'  
 Mr. Roger Durand  
 Mr. and Mrs. Salvatore Eacuello, Jr.  
 The Edwin S. Soforenko Foundation  
 Ms. Cheryl D. Ethier  
 EYP Architecture & Engineering  
 Ralph V. Fleming, Jr. \*\*  
 FUJIFILM Electronic Materials  
 Mr. Frank Fusaro  
 Mr. and Mrs. Edward J. Galvin  
 Gamestop  
 Mr. David Emil Garamella and Mrs. Shawn K. Polizzi  
 Andrew Gazerro, III, DMD  
 Mr. Leonard Gemma  
 Mr. Antonio Giarrusso \*\*  
 Mr. and Mrs. Jeffrey J. Giguere \*\*  
 Dr. Richard Gillerman  
 Mr. James Gray \*\*  
 Richard G. Greco, MD \*\*  
 Godfrey B. Simonds Fund  
 Mr. and Mrs. James M. Hagerty \*\*  
 Hanover Insurance Company  
 HarborOne Bank  
 Dr. and Mrs. John W. Hayes  
 Mr. and Mrs. David D. Henderson  
 Hilb Group of NE  
 Dr. Mark Holdsworth \*\*  
 Huffmaster  
 Mr. Gary C. Jarvis  
 John J. & Nancy E. Hudson Charitable Foundation \*\*  
 Mr. and Mrs. David W. Johnson \*\*  
 Mr. and Mrs. Paul M. Joncas \*\*  
 Mr. W. T. Kammerer, II  
 The Kane-Barrengos Foundation \*\*  
 Katie DeCubellis Memorial Foundation  
 Mr. William T. Kawam, Jr. \*\*  
 Mr. and Mrs. Keith D. Kelly  
 John W. Kennedy Company, Inc.  
 Mrs. Melinda H. Knight \*\*  
 Ms. Linda D. Knowles  
 Jonathan D. Kurtis, MD and Jennifer Friedman, MD  
 Ms. Sandra M. LaFratta  
 Steven Lampert, MD and Anita Feins, MD  
 Mr. and Mrs. Ralph G. Lawrence \*\*  
 Zachary Levesque  
 Dr. William J. Lewander and Mrs. Treacy J. Lewander

Mr. and Mrs. Gregory Lombardo \*\*  
 Mr. and Mrs. Oscar W. Look, IV \*\*  
 Mr. and Mrs. David E. Maher  
 Marshall Building & Remodeling  
 Mr. and Mrs. Jay R. Marshall  
 Mr. and Mrs. John A. Matta \*\*  
 Mr. Dennis P. McGuire, Sr. \*\*  
 Mr. and Mrs. Robert P. Mead  
 Mr. and Mrs. Bob Mello  
 Michael and Marianne Migliori  
 Ms. Karen Molinaroli \*\*  
 Mr. and Mrs. Kevin P. Moore \*\*  
 Mr. and Mrs. Robert Moreau  
 Mr. Paul Mott  
 Daniel and Christine Moynihan  
 John B. Murphy, MD and Anne W. Moulton, MD  
 Michael P. Murray CPA  
 Mr. and Mrs. Michael P. Murzycki \*\*  
 New England Laborers' Health and Safety Fund  
 New England Regional Council of Carpenters  
 Nixon Peabody, LLP  
 Mrs. Donna M. O'Brien  
 Mr. and Mrs. Kevin D. Orth \*\*  
 Our Lady of Good Counsel  
 Frank and Hannah Overly  
 Ms. Cathy Pagliarini  
 Mr. Ray Paiva  
 Dana R. Palka, RN  
 Mr. and Mrs. David W. Palmer \*\*  
 Mr. Michael Paolucci  
 Mr. and Mrs. Christopher N. Patton  
 Ms. Jacqueline Patterson \*\*  
 Ms. Joanne Patterson  
 Pawtucket Credit Union - Main Office  
 Richard and Cindy Pelletier  
 Mr. and Mrs. Joseph R. Perroni, III  
 Ms. Elizabeth T. Peterson \*\*  
 Paul and Eleanor Pierannunzi



PKF O'Connor Davies  
 Mr. and Mrs. Peter C. Plumb \*\*  
 Positive Tracks  
 Pratt Radiation Oncology Associates, Inc.  
 The Providence Mutual Fire Insurance Company  
 Quality Tile  
 The Rawnsley Family  
 Cheryl L. Raymond, DC  
 Regan Heating and Air Conditioning  
 Rhode Island Parent Information Network  
 Rhode Island Turnpike and Bridge Authority  
 The Rotary Foundation DAF

Ruggieri Brothers, Inc.  
 Mr. Douglas E. Scala  
 Mr. David Schloss  
 Mr. and Mrs. William F. Schmiedeknecht, Jr.  
 Dr. Jeremiah D. Schuur and Ms. Lauraine Boccone  
 Scituate Lions Club  
 Mr. Thomas Seewoester  
 Mr. Rian Seger \*\*  
 Ms. Sarah Selby  
 Dr. Judith Shaw and Mr. Bruce Shaw  
 Shore's Fresh Food Market  
 Silent Drop LLC  
 Smalletz Family Charitable Fund  
 Andy and Maureen Soutter  
 Mr. and Mrs. Patrick J. Spratt  
 Mr. and Mrs. George Stamatakos  
 Mr. and Mrs. Donald R. Swanson \*\*  
 Dr. and Mrs. David W. Swenson \*\*  
 Ms. Jessica Tasca \*\*  
 Mr. and Mrs. Anthony J. Thomas, Jr.  
 Traverse Landscape Architects  
 Twin River  
 Uno Restaurants, LLC  
 Van Liew Trust Company  
 Ms. Melisa A. Verrecchia and Mr. Andrew J. Marr \*\*  
 Ms. Lindsey Viveiros  
 David E. Wazer, MD  
 Walmart Stores, Inc. #1873  
 Walmart Stores, Inc. #2184  
 Walmart Stores, Inc. #2283  
 Walmart Stores, Inc. #2366  
 The Washington Trust Company  
 Wawaloam Campground  
 Nidia S. Williams, PhD  
 Mr. and Mrs. Thomas C. Winchell  
 Mr. James Wing  
 Worcester Red Sox  
 Mr. John P. Yorkery \*\*  
 Dr. James W. Ziegler and Dr. Joy Ziegler \*\*

## \$500—\$999

Mr. and Mrs. Michael S. Abbood  
 AGI Construction  
 Mr. and Mrs. William Almon, Jr.  
 Mr. Russell P. Alves \*\*  
 Amaranth of RI Diabetes Fund  
 American Aerial Equipment  
 Mr. and Mrs. Jason E. Ames \*\*  
 Mr. and Mrs. Richard W. Anderson \*\*  
 Andrew Gomez Dream Foundation  
 Anonymous (3)  
 Mrs. Amy Antunes  
 Ms. Melissa M. Arruda  
 Ms. Leili Azadivar  
 Mr. Allan W. Ballou and Ms. Diane E. Stratton \*\*  
 Mr. and Mrs. Valentino F. Barichello  
 Ms. Sarah Barrow and Mr. Nathan White  
 Dr. Lionel Bercovitch and Dr. Anne Bercovitch \*\*  
 Mr. and Mrs. Timothy P. Bergeron \*\*  
 Mr. Victor A. Bica \*\*  
 Mr. Kevin Blake  
 Mrs. Karli J. Blossom  
 Mr. Jeffrey Borges \*\*  
 Ms. Bernice A. Broccoli  
 Bruno & Son Electric Inc. \*\*



BuildRI

Ms. Crystal Byers and Mr. Ryan Fazekas  
Carbon Filtration Systems, Inc. \*\*  
Mr. John J. Cardosi, Jr. \*\*  
Mr. and Mrs. James L. Carr, III \*\*  
Dr. Megan and Nicholas Catalozzi \*\*  
Ms. Marilyn J. Chadwick \*\*  
Mrs. Denise A. Chakoian and Mr. David J. Olney  
Wen-I Chang, MD  
Mr. and Ms. David Charlton  
Dr. Sonja D. Chen  
Cincotti Family Charitable Fund \*\*  
Ms. Kerry A. Clark  
Coaches Cure CF Inc.  
Ms. Alicia Coelho  
Mrs. Marilyn E. Colvin \*\*  
Drs. Scott and Theresa Colonna \*\*  
Ms. Julie R. Connors-Costello  
Dr. Celeste Corcoran and Dr. James Corcoran  
Coventry Donuts Inc.  
Mr. and Mrs. Derek Crandall  
Mr. Ernest L. Crivellone \*\*  
Mr. and Mrs. William J. Cunningham \*\*  
Dr. Jordan T. Daniel  
Ms. Nancy Daponte, RN  
Day of Portugal and Portuguese  
Mr. and Mrs. William Degnan  
Mrs. Bobbi O. Desrosiers  
Mr. and Mrs. Steven A. Devin  
Mr. and Mrs. David J. DiClemente  
Mr. Louis Dietcher and Mrs. Samantha Lomow \*\*  
Dr. and Mrs. Douglas D. Ditmars  
Ms. Christine J. Doherty  
Mr. and Mrs. Russell N. Dominique \*\*  
Dr. and Mrs. Joseph L. Dowling, Jr. \*\*  
Charlene P. Dralean, NSN  
Mr. Robert J. Dwares  
Myra J. Edens, NSN, RN  
Richard W. Emery, Jr.  
Fall River Marriott  
Dr. and Mrs. James Fanale \*\*  
Mr. James P. Faulkner  
Mr. and Mrs. Anthony J. Ferranti, II \*\*  
Mr. and Mrs. Larry E. Fish  
Edwin N. Forman, MD \*\*  
Mr. Anthony Fossa \*\*  
Mr. John A. Frascotti and Mrs. Sharon O'Connor \*\*  
Ms. Helen C. Gannon  
Mr. and Mrs. John F. Garcia  
The George C. and Ella Spencer Vermont Fund  
Georges and Carolyn Peter Fund \*\*  
Mr. and Mrs. James M. Gilbane  
Mr. and Mrs. Peter T. Ginnatt  
Mrs. Dana Gleadow  
Ms. Marissa Golomboski  
Richard Gudoian, Jr.  
Pamela A. Harrop, MD and Marilyn J. Weigner, MD  
Mr. Mark E. Hasbrouck  
Mr. and Mrs. Harvey Hayes  
Thaddeus W. Herliczek, MD  
Mr. and Ms. Gregory P. Heron  
Dr. Pamela C. High and Mr. Louis R. Giancola  
Dr. and Dr. Joshua Honeyman, MD  
IBPO Local 301  
International Marine Industries, Inc.



J. Poulos' Automotive, Inc.  
Jeffrey and Ismenia Jackson  
Mr. and Mrs. Robert L. Jameison \*\*  
Mrs. Donna L. Kaplan  
Ms. Brenda Kiernan  
Mr. and Mrs. Michael J. Kramer \*\*  
Mr. Joel Kramer \*\*  
Mr. and Mrs. Jamie Kuzman  
Ms. Patricia M. Larue  
Ms. Holly Lavallee \*\*  
Mr. Blake Laverdiere  
Mrs. Jaclyn Leibl-Cote and Mr. Christian Leibl-Cote \*\*  
Mr. and Mrs. Joseph L. Lentini  
Mr. and Mrs. Christopher J. Levy  
Ms. Patricia Lima \*\*  
Mayor and Mrs. Charles Lombardi  
Mr. Rodrigo Lopez  
Elizabeth A. Lowenhaupt, MD \*\*  
M. A. Excavation, Inc.  
Ms. Suzette Maciel  
Mr. and Mrs. Joseph R. Margadonna \*\*  
Mr. and Mrs. Nicholas Martone  
Mr. and Mrs. Robert A. Masi, Jr. \*\*  
Mr. Gary S. Mataronas \*\*  
Mr. and Mrs. James J. McAllister, Jr.  
Ms. Kyle J. McDonald  
Ms. Maureen McKenna-Goldberg  
Mr. Joseph McKenna and Ms. Nancy A. Santos  
Mr. and Mrs. Patrick J. McKenna  
Mr. and Mrs. John McLandsborough  
McWhirter Family Fund \*\*  
Miss Khloe Mederios  
Mr. Antonio Medina  
Dr. and Mrs. Richard M. Mello \*\*  
Mr. James A. Mellors  
Ms. Noelle Mendonsa  
Dr. Stephen J. Migliori  
Mr. and Mrs. William R. Miller, Jr.  
Dr. and Mrs. Richard P. Millman \*\*  
Mr. and Mrs. Ernie Moreira  
Ms. Fatima Morel  
Mr. Gregory A. Morris and Ms. Kaitlyne E. Ward  
Dr. and Ms. Paul E. Morrissey  
Mrs. Heather J. Mossey  
Motor Sport Accessories, Corp.  
Mr. Anthony Muccio  
Mr. Brian Murphy  
Kevin and Kate Murphy  
The Honorable and Mrs. Kevin B. Murphy

Ms. Pasha Murphy  
Mr. and Mrs. Theodore W. Neilson  
New England Fence Co. \*\*  
Mr. and Mrs. Brian H. Nichols  
Nico's Tree Foundation  
Dr. Jill A. O'Brien  
Mr. John O'Connor  
Mr. and Mrs. Michael O'Neil  
Mr. and Mrs. Ronald M. Paolino \*\*  
Steven M. Pare, Commission of Public Safety,  
City of Providence  
Mr. and Mrs. Kenneth N. Parisi  
Jacqueline and David Parrillo  
Cheryl A. Peck, BSN, RN, CCRN  
Ms. Jessica R. Pernicone \*\*  
Debra A. Petteruto  
Ms. Pamela J. Pomfret  
The Prendergast Family  
JB Quintos, MD \*\*  
R A Decesare Builders Inc.  
Suraj S. Ram \*\*  
Mr. and Mrs. Daniel Rampone  
Mr. Peter Reagan \*\*  
Mr. and Mrs. Andrew Reidl  
Ms. Christine Remillard  
Mr. and Mrs. Richard V. Rheinberger \*\*  
Rhode Island Blood Center  
Patricia and Mark Richards  
Ms. Kathy Richardson  
Mr. and Mrs. David C. Riese \*\*  
Robert and Sen Mee Tow Family Foundation \*\*  
Mr. and Mrs. Lloyd J. Robertson, Jr.  
Mr. Kevin Rodrigues  
Roscati Construction Company LLC  
Ms. Juliana Rose  
Kathleen M. Rotondo, MD  
Dr. Ranna A. Rozenfeld  
Ms. Michelle Russo  
St. Mary's Feast Society  
Mr. and Mrs. Joseph D. Salpietro, III  
Dr. Margaret Scheffler Heil and Mr. Jeff Scheffler  
Mr. Peter Brett Scoliard and Ms. Sarah E. Sinclair \*\*  
Ivona Sediva, MD  
Mrs. Susan L. Sekelsky  
Mr. and Mrs. John P. Sheerar \*\*  
Mr. and Mrs. Gardiner L. Sherman \*\*  
Dr. and Mrs. Mark Sigman  
Signet Investment Advisory Group  
Mr. William F. Slinko \*\*  
Mr. and Mrs. Theodore W. Smalletz  
The Philip Snyder Foundation \*\*  
Mr. Nick Spano  
Ms. Jennifer L. Spaziano \*\*  
Stephen's Masonry, Inc.  
Subway  
Mr. and Mrs. Robert F. Sullivan \*\*  
Konstantina A. Svokos, DO \*\*  
Mr. and Mrs. Joseph E. Swift  
Ms. Joanne E. Tainsh  
Mr. Andy Tavares \*\*  
Mr. and Mrs. William W. Templeton \*\*  
Textiles2 Inc.  
Toll Gate Orthodontics  
Mr. and Mrs. Stephen Tortolani  
Mr. Pasco Troia



Ms. Erin K. Truman  
 Mr. and Mrs. David Tulchin \*\*  
 Dr. Glenn and Dr. Nadine Tung  
 Mr. Richard Urban and Ms. Denise Nelson \*\*  
 Usborne Books and More  
 James A. Vespia, Esq.  
 Votolato and Paziienza  
 Walmart Stores, Inc. #1964  
 Walmart Stores, Inc. #2225  
 Mr. Dustin J. Wesolowski  
 Mr. Ryan P. Whalen  
 Mr. and Mrs. Donald S. Williams  
 Jane and John Williams  
 The Winter Family Foundation  
 Mr. Sidney Wordell  
 Mr. and Mrs. David Zito  
 Mark Zonfrillo, MD

**\$250—\$499**

Dr. and Mrs. Roy K. Aaron \*\*  
 Mr. and Mrs. Georgios Adilinis \*\*  
 Mr. James H. Alix  
 Ms. Nancy J. Allen \*\*  
 Mr. Marc Almeida  
 Mr. and Mrs. Oscar Almeida  
 American Aqua Systems Inc.  
 Mr. Nick Anania  
 Ms. Constance Anderson  
 Robert H. Andler, MD \*\*  
 Guida J. Andrade  
 Anonymous (6)  
 Douglas and Helen Anthony \*\*  
 Ms. Ann Antunes  
 Dr. and Mrs. Jonathan Argo \*\*  
 Ms. Kimberly Arruda  
 Mr. Yvorn Aswad  
 Mr. and Mrs. Marc Backon \*\*  
 Mrs. Clare Baffoni  
 Mr. and Mrs. John F. Bannon \*\*  
 Mrs. Lisa Barbosa  
 Mr. and Mrs. Christopher Baxter \*\*  
 Mr. and Mrs. Harvey A. Bennett, Jr. \*\*  
 Mr. Joseph R. Beretta \*\*  
 Ms. Margaret J. Bertolino, USN  
 Mr. and Mrs. Robert Bertsch  
 Mr. David Bessette

Mr. and Mrs. John Blodgett  
 Mr. and Mrs. George J. Boiros \*\*  
 Ms. Michele P. Brannigan \*\*  
 Ms. Elizabeth Breidinger \*\*  
 Mr. Joseph J. Briggs \*\*  
 Ms. Pauline J. Brodeur \*\*  
 Mr. and Mrs. Steve T. Brosnihan  
 Mr. Paul S. Brown \*\*  
 Mr. Daniel C. Bryant and Mrs. Elizabeth Burke Bryant  
 Mr. Daniel P. Buonomo  
 Mr. and Mrs. Ian C. Burgess \*\*  
 Mr. and Mrs. Lewis T. Burke \*\*  
 Ms. Katy Cabral \*\*  
 Ms. Theresa Cabral  
 Drs. Joseph and Rachel Caiati \*\*  
 Mr. and Mrs. Benjamin Calouro  
 Mr. Tony M. Camara \*\*  
 Mr. and Mrs. Gregory R. Cambio  
 Ms. Barbara J. Caniglia  
 Ms. Dayna M. Cantone  
 Ms. Ann Marie Carbone  
 Ms. Patricia A. Carlson  
 Ms. Addison Carty  
 Mr. and Mrs. Craig Casey  
 Chariho Rotary Club Foundation, Inc.  
 Mr. Derek Chaves \*\*  
 Mr. John Cibor  
 Mr. and Mrs. Felix Cintron  
 Mrs. Lisa Colacone  
 Mrs. Victor Colantino \*\*  
 Mr. James E. Collins  
 Dr. and Mrs. Norberto G. Concepcion  
 Mr. and Mrs. John S. Costantino \*\*  
 Mr. and Mrs. Christopher Corey  
 Mr. and Mrs. Joshua Cottle  
 Mr. and Mrs. Stephen J. Craven  
 Mr. and Mrs. Mark E. Crevier  
 Ms. Maureen W. Curran  
 Mr. Robert A. D'Amico, II  
 Mrs. Shari S. Dawson  
 Mr. Ramiro Delgado  
 Ms. Jennifer Delisle  
 Mr. and Mrs. Edward W. Dence, Jr. \*\*  
 Mr. and Mrs. Frank J. D'Ercole \*\*  
 Ms. Rose M. Deschunes  
 Ms. Josephine DiRuzzo \*\*  
 Mr. Eric Doescher \*\*  
 Mr. Paul Dooley  
 Mr. Alexander Dowd  
 Ms. Michelle A. Drolet  
 Mr. and Mrs. David D. Dubosky \*\*  
 Mr. and Mrs. Shawn J. Dugan  
 Mr. and Mrs. William P. Edenbach, III  
 Dr. and Mrs. Tom Enright  
 Excellent Pizza \*\*  
 Mr. and Mrs. John M. Falvey \*\*  
 Mr. David Faunce \*\*  
 Mrs. Dawn D. Feret  
 Mr. Robert Ferreira, Jr. \*\*  
 Mr. and Mrs. Louis Feula  
 Ms. Jaclene Fleming \*\*  
 Mrs. Melissa J. Flood  
 Mr. and Mrs. Thomas A. Flynn \*\*  
 Mr. Colin P. Fogarty, Sr.

Mrs. Jacqueline Fradin \*\*  
 The Fremont Group Foundation  
 Ms. Corrie Freudenstein  
 Gregory K. Fritz, MD and Nancy Fritz \*\*  
 Mrs. Barbara Gagne  
 Ms. Holly Gagnon \*\*  
 Ms. Margarita Haidous Galey  
 Ms. Nicole Garvey  
 Dana-Marie Gesmondi, RN, MSN  
 Ms. Christine Gibbons  
 Glen Hills Elementary School  
 Mr. Tony Gomes \*\*  
 Mr. Christopher J. Good and Ms. Robyn Ericsson \*\*  
 Mr. and Mrs. Joseph A. Gruttadauria  
 Guardian Pest Control, Inc. \*\*  
 Mrs. Christina J. Haas  
 Ms. Jean M. Halvorsen  
 Mr. Scott L. Hartwell and Ms. Jillian S. Folger-Hartwell  
 Mrs. Donna M. Haugen \*\*  
 Major General Thomas J. Haynes and Ms. Barbara R. Haynes  
 Ms. Ann M. Heron  
 Mr. Gary Hill  
 Mr. Michael Hirtle and Ms. Judith Coffey \*\*  
 Mr. Edward C. Holloway  
 Capt. and Mrs. Garry Holmstrom \*\*  
 Mr. and Mrs. Jordan Holt  
 Mr. and Mrs. Donald K. Horton  
 Mr. and Mrs. Virak In  
 Dr. Wanda Johnson Ingram  
 Iozzi Builders  
 Nancy P. Jean  
 Ms. Lori A. Joseph  
 Mr. Christopher J. Josephson  
 Dr. Vania L. Kasper  
 Susan F. Korber, MS, RN  
 Ms. Cheryl A. LaBonte  
 Ms. Brittany LaFountain  
 Mr. Mario Lagoa  
 Ms. Paulette D. Lamarque  
 Mr. and Mrs. Kenneth A. Lancellotti  
 Ms. Kathleen E. Langton  
 Mrs. Phyllis R. Laporte  
 Dr. and Mrs. Abbot R. Laptook  
 Mr. and Mrs. John Laquale  
 Mr. Frederick Lazzareschi \*\*  
 Mrs. Tara Legaski  
 Ms. Lindsay E. Leger  
 Mr. and Mrs. Alfred H. Liddle, III \*\*  
 Mr. David Lima \*\*  
 Lincoln Urgent Care  
 Carl B. Lisa, Esq. \*\*  
 Ms. Lorraine Lisi  
 Mr. and Mrs. Robert A. Lisi  
 Alan and Marianne Litwin  
 Mr. Steven R. Lombardi and Ms. Holley Tucker  
 Mr. Richard Lyons  
 Dr. Christopher J. Malgieri  
 Mr. and Mrs. Marco Mancini \*\*  
 Mrs. Deborah MarcAurele  
 Marian Schwartz Family Foundation \*\*  
 Mr. Joseph P. Martin  
 Mrs. Amber L. Massed \*\*  
 Mr. and Mrs. Joshua B. Mathis  
 Mr. and Mrs. Charles J. McCarthy



Mr. James P. McEvoy  
 Dr. and Mrs. Edward McGookin \*\*  
 Mr. Robert E. McGowan \*\*  
 Ms. Paulette McIntyre  
 Dr. Michael G. Medouris and Dr. Deanne S. Medouris  
 Mr. and Mrs. James P. Mendrek \*\*  
 Miss Laurie Miller  
 Mr. Robert B. Mitchell  
 Ms. Jodi Monteiro  
 Ms. Jennifer Morse  
 Mr. Vincent Morelli, Jr.  
 Moriarty's Fence Co. \*\*  
 Mr. and Mrs. Robert A. Moskol  
 Mr. and Mrs. Wayne A. Mossey  
 Dr. Albert Most and Paula Most  
 Ms. Jonna L. Mulvaney  
 New England Patriots Charitable Foundation  
 Ms. Erika Normann  
 Mr. and Mrs. Joseph Notargiacomo  
 The Honorable and Mrs. John J. O'Brien, Jr. \*\*  
 Mr. Matthew O'Connor \*\*  
 Mr. Michael J. O'Connor  
 Mr. Jack E. O'Donnell and Ms. Pamela S. Stanton \*\*  
 Mrs. Suzanne L. Olerio  
 Mr. Kerion O'Mara  
 Mr. Jonathan Paine  
 Ms. Elaine F. Papa \*\*  
 Dr. Salley G. Pels, MD  
 Mr. and Mrs. Alphonso Petrasso, Jr. \*\*  
 Dr. and Mrs. Joseph E. Pezza  
 Mr. and Mrs. Robert A. Pezza \*\*  
 Mr. and Mrs. Peter M. Pflock  
 Mr. and Mrs. Steven Pietrantozzi  
 Mr. and Mrs. Nelson Pires \*\*  
 Dr. and Mrs. Lee Polikoff  
 Mrs. Paulette A. Polidoro  
 Dr. Brian F. Pontarelli and Ms. Rulla Nehme Pontarelli  
 Mr. Arthur Pontes, Jr.  
 Mr. Timothy Porter \*\*  
 Mr. Mario P. Pregoni \*\*  
 Ms. Stefanie S. Proulx  
 Dr. and Mrs. John J. Przygoda \*\*  
 Mr. and Mrs. Jeffrey W. Pughe  
 Ms. Frances Quin  
 Professor Glenn Radice  
 Mr. and Mrs. David P. Raiche \*\*  
 Ms. Linda Ramos  
 Mr. Joseph E. Reynolds  
 Mr. Michael L. Ricciardi  
 Ms. Karen Rice  
 Mr. and Mrs. George H. Rinaldi \*\*  
 Ms. Katherine M. Ringe-Welch \*\*  
 David J. Rivard\*  
 Mr. Daniel W. Robbins, Sr.  
 Mr. and Mrs. Timothy J. Robenhymer \*\*  
 Mr. Jeffrey Rodrigues  
 Dr. and Mrs. Walter J. Rok \*\*  
 Ricardo A. Rosales, MD and Kathleen M. McCarten, MD

Sir and Mrs. Michael J. Rose \*\*  
 Ms. Nancy A. Rose  
 Mrs. Abigail C. Rowe  
 Mrs. Nancy J. Rowell \*\*  
 Dr. and Mrs. Gary Dean Roye \*\*  
 Mr. and Mrs. Edward A. Rudegair  
 Mr. and Mrs. John T. Ruggieri, III \*\*  
 Ms. Lia Rushton  
 Mr. and Mrs. John B. Russell  
 St. Luke's School  
 Mr. Paul F. Salisbury  
 Ms. Patricia J. Samson  
 Mrs. Ashley Santos  
 Mr. and Mrs. Mathies J. Santos \*\*  
 Mrs. Sandra A. Schuetz  
 Mr. and Mrs. William R. Scott \*\*  
 Ms. Kyle Seyboth  
 Shake Shack  
 Ms. Jennifer K. Shea  
 Ms. Nina Shepard  
 Dr. and Mrs. Michael S. Shusterman, MD \*\*  
 Mr. James L. Shuster  
 Mr. Russell Siembab  
 Mr. and Mrs. Jeffrey M. Silva  
 Dr. Melissa Simon  
 Ms. Gretchen D. Simpson \*\*  
 Mr. David R. Sinapi  
 Ms. Patricia Skurka  
 Lee Slamin \*\*  
 Eileen M. Sloan  
 Ms. Barbara N. Slover  
 Mrs. Lisa Snyder  
 Sociable Sams  
 Mrs. Angelyn C. Sotirakos  
 Kate Sparrow  
 Ms. Kathleen M. Sprague  
 Ms. Susan Staniszewski  
 Mrs. Wendy Stawicki  
 Mr. Peter Stojek \*\*  
 Edward Suh, MD \*\*  
 Ms. Nancy E. Swift  
 Mr. David W. Taft  
 Mr. and Mrs. David Tarantino  
 Mr. and Mrs. Aldo N. Testa \*\*  
 Mr. and Mrs. David F. Tetreault \*\*  
 Mr. and Mrs. Steven M. Tillinghast \*\*  
 Elizabeth T. Toll, MD  
 Ms. Yvonne M. Tousignant  
 Ms. Donna M. Travers  
 Mr. and Mrs. Richard M. Travers  
 Mr. and Mrs. Peter Troy  
 Mrs. Ruth G. Tureckova  
 Mr. and Mrs. Terrence M. Tyrrell \*\*  
 Urban Blinds  
 Ms. Jennifer Vachon \*\*  
 Mr. and Mrs. Bruce W. Van Saun \*\*  
 Mr. and Mrs. Maurice A. Vidal \*\*  
 Mr. and Mrs. Lawrence A. Vincent

Arlene M. Violet, Esq. \*\*  
 Ms. Suzanne Vitalo  
 Mr. and Mrs. John M. Walsh  
 Mr. Matthew Walther  
 Jennifer J. Greene Welch, MD  
 Westerly Community Credit Union  
 Mrs. Richelle Wheeler  
 Mrs. Jeannette Wilbur  
 Dr. Albert Woo and Dr. Judy Jang \*\*  
 Mr. Glenn J. Woodbine



## Living Heritage Society

Anonymous (5)  
 Mr. Richard Cadoret  
 Ms. Marilyn J. Chadwick  
 Kay and Leon Cooper  
 Karen Del Ponte and Tony Allison  
 Mr. Frank DelSanto  
 Mr. and Mrs. Anthony Del Vecchio  
 Mr. and Mrs. Peter Detora  
 Mr. and Mrs. John F. Garcia  
 Mrs. Ann Marie Glaude  
 Mr. Anthony Goes and Ms. Estelle Hero  
 Mr. Duangpasith Hongkham  
 Mr. and Mrs. Greg E. Hyman  
 Mrs. Sonja Mogel  
 Mr. and Mrs. James A. Roehm  
 Mr. Richard E. Seymour  
 Mr. and Mrs. Russell R. Shippee  
 Mr. and Mrs. Karl J. Simon  
 Mr. and Mrs. D. David Slaven  
 Ms. Arlene M. Violet, Esq.  
 Mr. and Mrs. Daniel J. Wall

\*deceased

\*\*Heroes for Hasbro





## GOLF INVITATIONAL BREAKS RECORDS



Larry Aubin, CALLI, and Jamo Carr

Despite a month marked with rain and unsettled weather, the sun was out in full force on Monday, July 26, as a full flight of golfers hit the links at Rhode Island Country Club for the 25th anniversary of the Hasbro Children's Golf Invitational.

Under a bright sky, the event raised a record-breaking \$433,000, bringing its total since inception to nearly \$6 million in support of programs such as the Aubin Child Protection Center, Child Life, and many other services critical to the care of patients and their families. Of the total raised, \$66,000 was generated during a special fund-a-need to support renovations in the hospital's pediatric hematology/oncology center.

The invitational is co-chaired by Lifespan's Chairman of the Board, Lawrence A. Aubin, Sr., and Rhode Island Hospital Foundation trustee James "Jamo" Carr, Jr., the President and CEO of H. Carr and Sons, Inc.

"It was absolutely wonderful to be able to come together this year for such an important event," says Larry. "The best part is having raised substantial funds to support programs that wouldn't otherwise be possible if not for philanthropy."

CALLI, the therapy dog from the Aubin Child Protection Center, even stopped by for a quick visit and to thank players for their ongoing commitment to the tournament, and the programs it supports.

*Healthy Futures*, a publication of Hasbro Children's Hospital, is published for our friends and supporters.

At times we share news and information with our donors electronically. If you'd like to receive timely updates by email and help us reduce paper and postage costs, please email [HCHGiving@lifespan.org](mailto:HCHGiving@lifespan.org).

We invite you to learn more by contacting the Development Office at 401-444-4639 [giving.lifespan.org/Hasbro](http://giving.lifespan.org/Hasbro).

